

Natural gas

is a

clean-burning fossil fuel that powers industries and heats more than half of all American homes. North America has a natural gas delivery system that includes about 2 million miles of natural gas transmission pipeline. This system has an outstanding safety record and is operated and maintained in accordance with strict federal and state regulatory requirements.

MidAmerican Energy safely operates about 796 miles of this natural gas transmission pipeline in Iowa, Illinois and South Dakota.

DIGGING?

Before you dig, fill, bore – or otherwise disturb the earth – dial 811 at least two full working days before you begin your project.



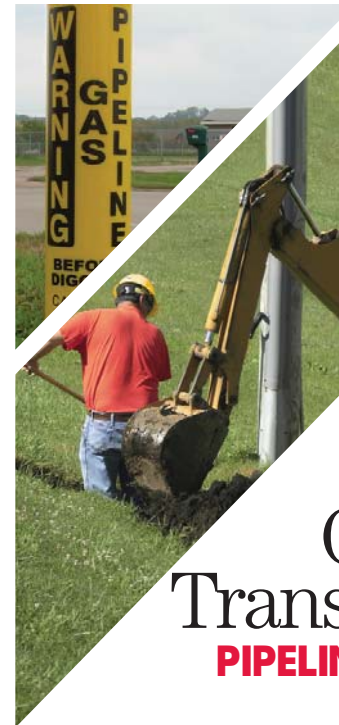
**Know what's below.
Call before you dig.**

**For pipeline information, call
888-427-5632.**

**To report a gas leak, call
800-595-5325.**

**Remember, call 911 if there is an
emergency or immediate threat.**

For more information about pipeline operators located within a specified geographic area, visit the National Pipeline Mapping System Web site and complete a search at www.npms.phmsa.dot.gov/publicsearch



Gas Transmission PIPELINE SAFETY

www.MIDAMERICANENERGY.com



To ensure the safety and reliability of its facilities, MidAmerican Energy regularly does patrols of its pipeline system. While we work diligently to monitor and maintain our delivery system, we rely on you to follow all natural gas safety rules and report any incidents. Because of its importance to America's economy and everyday life, we all have a stake in the safety and security of the nation's natural gas pipelines.

PIPELINE SAFETY – A JOINT EFFORT

How Can You **HELP?**

1. KNOW ABOUT NATURAL GAS

Natural gas is neither toxic nor poisonous. In fact, it's one of the safest sources of energy available. However, use caution, its danger is that it can burn and explode.

2. DIAL ONE CALL (811) BEFORE YOU DIG

Natural gas pipelines may be closer to the surface than you think. And, you may not know which direction they run. Any time you plan to disturb the earth, whether as part of a construction job or homeowner's project, such as putting up a fence, planting a tree or building a home addition, dial 811 at least two full working days before excavation – it's a free service and it's the law. Also, ask neighbors or contractors if they called One Call before starting to dig.



Those who do not have utility lines marked are liable for any damages their excavation may cause, and are subject to fines.

3. BE AWARE OF PIPELINE MARKERS

Because natural gas pipelines are underground, the public is often unaware of their presence. However, pipelines may be in your neighborhood, or even on your property. The easiest way to know of their location is to look for pipeline markers. You will find these "warning" markers at roadways, railroad crossings, and at other points along the pipeline – they identify who owns the pipeline and how they can be reached.

Please report missing or vandalized pipeline markers to MidAmerican Energy at 888-427-5632.

Observing pipeline markers does not mean you are exempt from the One Call requirement. Markers are used to indicate the approximate location of pipelines. Never assume the pipeline lies in a straight line – it can turn between markers.

4. DO NOT BUILD STRUCTURES OR PLANT TREES IN THE "RIGHTS-OF-WAY"

If you have a natural gas pipeline on your property, the rights-of-way may be used for most purposes – as long as it does not interfere with maintenance or safe operation of the pipeline. Structures and trees, however, should not be placed within the 50-foot permanent rights-of-way because they obstruct access to the pipeline. Gardens, small shrubs and crops are acceptable.

If you have questions about your easement, call MidAmerican Energy at 888-427-5632 and ask to speak to a right-of-way representative.

5. REPORT SUSPICIOUS ACTIVITY

If it doesn't look right, it probably isn't. Report any unusual or suspicious activity you may see at a valve station or along the pipeline to the local police (911).

6. KNOW THE SIGNS OF A NATURAL GAS PIPELINE LEAK

- A hissing or whooshing sound
- Dirt being blown into the air
- Water bubbling or shooting into the air from a pond, creek or puddle
- A peculiar odor
- Dying shrubs or grass, perhaps near healthy plantings

7. KNOW WHAT TO DO IF YOU OBSERVE SIGNS OF A GAS PIPELINE LEAK

- Leave the area and try to keep others out
- Extinguish all open flames, including smoking materials
- Turn off and abandon equipment being used in or near the area. Do not attempt to move any machinery.
- Eliminate other sources of ignition (e.g. cell phones, a nearby running car)
- DO NOT attempt to extinguish a burning gas leak!
- Call MidAmerican Energy at 800-595-5325 and/or 911 from a safe distance

8. KNOW WHAT TO DO IF YOU HIT THE PIPELINE

Report it immediately to MidAmerican Energy at 800-595-5325 and One Call at 811. Even if the pipe appears to be undamaged, a scratch, gouge or dent to a pipe or its coating may cause a future safety problem.