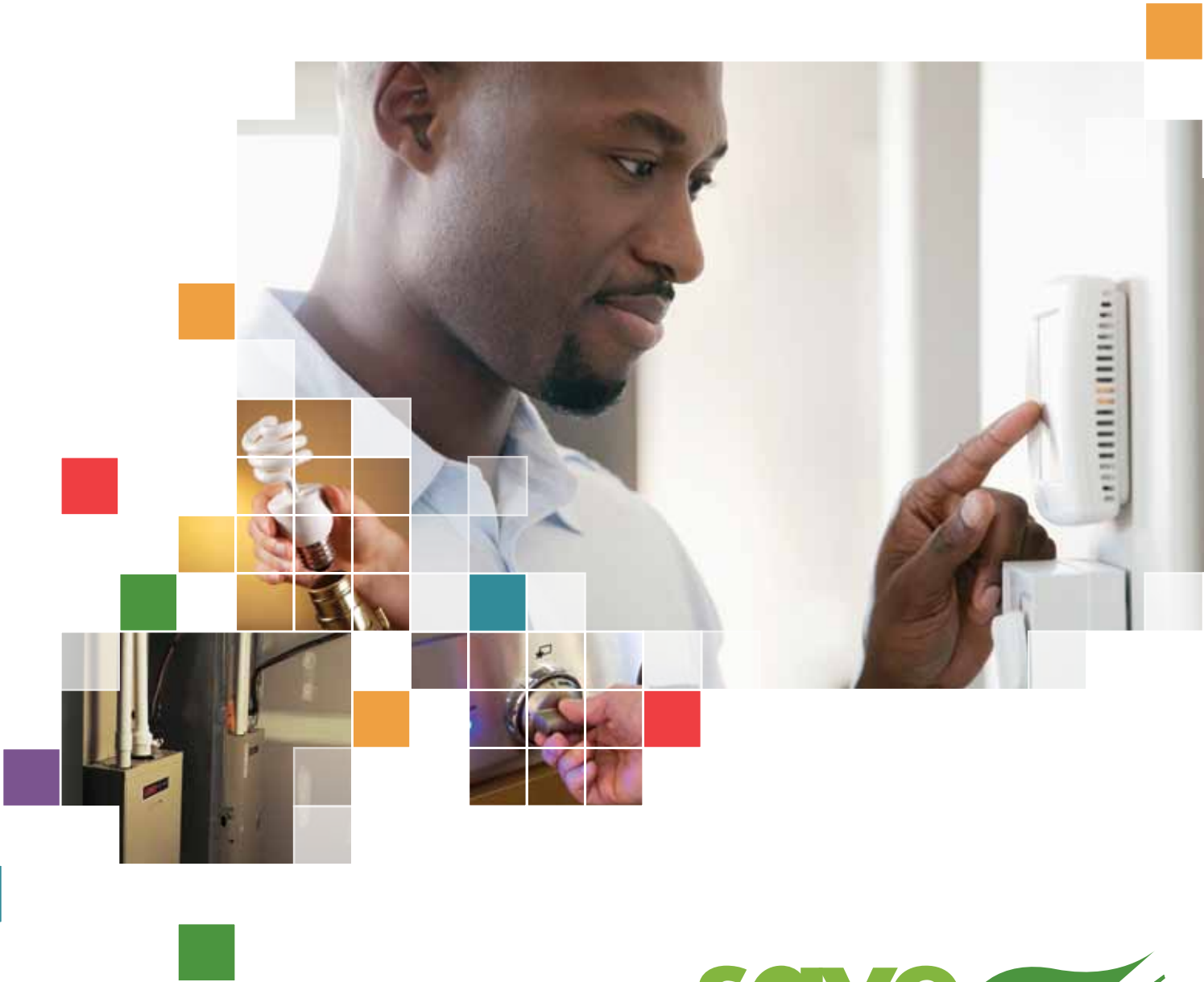


2012 SOUTH DAKOTA

# RESIDENTIAL EQUIPMENT PROGRAM

*Financial incentives for updating your home with high-efficiency equipment.*



save  
some  
green®

# SAVE ON EQUIPMENT INSTALLED IN SOUTH DAKOTA HOMES BETWEEN JAN. 1, 2012, AND DEC. 31, 2012.

The MidAmerican Energy Company's EnergyAdvantage® Residential Equipment program makes it easier for South Dakota customers to enjoy long-term savings on energy bills and increased comfort through new heating, cooling and water heating equipment rebates.



## Eligible Equipment

The Residential Equipment program offers rebates to South Dakota customers who purchase and install qualifying heating, cooling and water heating equipment fueled by natural gas and/or electricity supplied directly by MidAmerican Energy. Depending on the energy efficiency ratings of specific models, rebate amounts vary.

EQUIPMENT TYPE	REBATE AMOUNT
Natural gas furnaces	\$250 - \$400
Efficient furnace fan motors	\$50
Natural gas boilers	\$150 - \$400
Natural gas water heaters	\$50 - \$100
Electric water heaters	\$50
Window air conditioners	\$25
Central air conditioners	\$100 - \$200
Air-to-air heat pumps	\$100 - \$400
Add-on heat pumps	\$100 - \$400
Ground source heat pumps	
<i>New closed loop installation</i>	\$2,000
<i>New open loop installation</i>	\$1,000
<i>Replacement equipment</i>	\$1,000
<i>Desuperheaters</i>	\$100

Contact your heating and cooling dealer for the energy efficiency ratings of specific equipment.

## Higher Efficiency Yields Bigger Savings

Some of our rebates are structured so that more efficient equipment will qualify for higher rebates. To compare the efficiencies between natural gas furnaces, heating efficiency is measured in Annual Fuel Utilization Efficiency, and cooling efficiency is measured in Seasonal Energy Efficiency Rating. These ratings work like determining the gas mileage on a car. The higher the rating number, the higher the efficiency and the greater the energy savings. To qualify for a rebate, the furnace must have an AFUE of 92 percent or higher, and an air conditioner must have a SEER of 14 or higher. The chart on the following page will specify the rebate for several common efficiency levels.

## Participation Guidelines

Participating in the EnergyAdvantage Residential Equipment program is easy. After installing qualifying equipment, submit a completed Equipment Rebate Application and detailed invoice to MidAmerican Energy for approval. Your heating and cooling dealer has a supply of Equipment Rebate Applications and will participate in its completion. Your application must be postmarked by Jan. 31, 2013. Allow four to six weeks for processing. For more information, call **800-894-9599**.

# 2012 SOUTH DAKOTA RESIDENTIAL EQUIPMENT REBATE SCHEDULE

## Natural Gas Furnace Rebates

AFUE	REBATE AMOUNT
92-93%	\$250
94-95%	\$325
≥ 96%	\$400

## Natural Gas Boiler Rebates

AFUE	REBATE AMOUNT
85-89.9%	\$150
≥ 90%	\$400

## Air Conditioner Rebates

SEER	REBATE AMOUNT
14	\$100
≥15	\$200

## Rebate Schedule

EQUIPMENT TYPE	ENERGY EFFICIENCY RATING	REBATE AMOUNT	TERMS AND CONDITIONS
Natural gas furnaces	92-93% AFUE 94-95% AFUE 96% AFUE	\$250 \$325 \$400	Maximum rebate \$400
Efficient fan motor for natural gas furnaces	CEE air handling ratio < 0.02	\$50	Must be installed with new qualifying furnace; eligible for one rebate per motor; MidAmerican Energy must supply natural gas and electricity.
Natural gas boilers	85-89.9% AFUE 90% or greater	85-89.9% – \$150 90% or greater: \$400	Maximum rebate \$400
Natural gas water heaters	0.62-0.66 EF ≥0.67 EF	\$50 \$100	EF: Energy Factor 30 gallons or greater tank size; tankless water heaters are not eligible
Electric water heaters	> 0.93 EF	\$50	EF: Energy Factor 40 gallons or greater tank size
Window air conditioners 5,000-7,999 BTU 8,000-13,999 BTU 14,000-19,999 BTU ≥ 20,000 BTU	ENERGY STAR® EER ≥ 10.7 EER ≥ 10.8 EER ≥ 10.7 EER ≥ 9.4 EER	\$25	Must be ENERGY STAR-rated
Central air conditioners	14 SEER ≥ 15 SEER	\$100 \$200	Must install a new matched condenser and coil SEER: Seasonal Energy Efficiency Rating
Air-to air and add-on heat pumps	SEER 14 and <8.5 HSPF SEER 14 and ≥ 8.5 HSPF ≥ SEER 15 and <8.5 HSPF ≥ SEER 15 and ≥ 8.5 HSPF	\$100 \$200 \$200 \$400	< 65,000 Btu Must install a new matched condenser and coil HSPF: Heating Seasonal Performance Factor SEER: Seasonal Energy Efficiency Rating
Ground-source heat pumps			Rebates are per home and not per heat pump. Rebates are for single-family homes only; call for rebate information on multifamily homes.
New systems Closed loop Open system	3.3 COP and 14.1 EER 3.6 COP and 16.2 EER	\$2,000/home \$1,000/home	Equipment and new ground loop installation only
Replacement equipment GSHP Desuperheaters	3.3 COP and 14.1 EER	\$1,000/home \$100/home	

**All units must be rated by the Air Conditioning, Heating and Refrigeration Institute.**

DISCLAIMER: MidAmerican Energy Company does not guarantee that installation and operation of energy-efficient equipment will result in reduced usage or in cost savings. The manner in which a customer uses and maintains energy-efficient equipment affects potential cost savings. MidAmerican Energy Company makes no warranties, expressed or implied, with respect to any equipment purchased or installed, including, but not limited to, any warranty of merchantability or fitness for a particular purpose. In no event shall MidAmerican Energy Company be held liable for any incidental or consequential damages or injuries resulting from defective equipment or installation. MidAmerican Energy Company reserves the right to cancel or change these programs at any time. MidAmerican Energy Company's acceptance of this application does not guarantee payment of rebate.



# save some green®



## FEDERAL TAX CREDITS FOR ENERGY EFFICIENCY

Consult a qualified tax advisor or visit [www.energystar.gov/taxcredits](http://www.energystar.gov/taxcredits) for details on any applicable federal tax credits or incentives available for installation of energy-efficient equipment.

1174618286

800-894-9599  
[www.MIDAMERICANENERGY.com](http://www.MIDAMERICANENERGY.com)