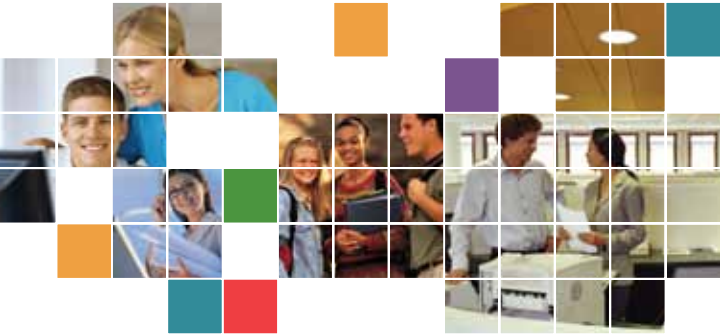




2012 SOUTH DAKOTA RESIDENTIAL AND COMMERCIAL / INDUSTRIAL ENERGYADVANTAGE[®] PROGRAMS



800-894-9599
www.MIDAMERICANENERGY.com





PROVIDING THE **POWER** OF ENERGY EFFICIENCY

From checking the insulation in homes to cutting energy expenditures for businesses, MidAmerican Energy Company offers a variety of programs designed to put the power of energy efficiency in the hands of our residential and business customers. With MidAmerican Energy's EnergyAdvantage® programs, customers can save money as well as do their part to reduce the overall demand on the natural resources needed to produce energy.

Individual program brochures are available electronically only. Visit www.midamericanenergy.com/ee, select For Residential Customers or For Business Customers, then select For South Dakota Customers to see individual program information and brochures. There you can download the brochures and application forms as needed.

RESIDENTIAL

If you are a homeowner living in South Dakota and are a MidAmerican Energy customer, our EnergyAdvantage® programs can help you better manage your energy expenditures and keep your home more comfortable.

HomeCheck® Program

The HomeCheck program provides heating energy customers, with homes built before Dec. 31, 1989, an on-site home audit, as well as installation of free low-cost energy efficiency measures. If the home qualifies for insulation rebates, the energy specialist will recommend insulation with rebates up to 70 percent or \$750 for attic, sidewall and foundation. Call 800-545-0762 for a HomeCheck audit, or visit www.midamericanenergy.com/homeaudit to complete an audit online.

SummerSaver™ Program

SummerSaver is a voluntary initiative for MidAmerican Energy customers who want to help reduce energy use at peak times. An air conditioner cycling device is installed on the siding of the home near the air conditioner or air-source heat pump. When cycling is necessary, from June 1 to Sept. 30, air conditioners are cycled between approximately 2 p.m. and 7 p.m. (but never on weekends or holidays). Participants receive a \$40 end-of-season incentive the first year and a \$30 incentive in following years. Call 800-437-2976 with questions.

Residential Equipment Program

Residential customers can receive rebates through the Residential Equipment program when they replace existing equipment. Rebates are available for qualifying equipment including: natural gas furnaces (\$250-\$400), natural gas boilers (\$150-\$400), natural gas water heaters (\$50-\$100), electric water heaters (\$50), central air conditioning (\$100-\$200), air-to-air heat pumps (\$100-\$400) and ground-source heat pumps (\$1,000-\$2,000). In addition to saving money through financial incentives, customers receive long-range benefits with lower utility bills.



FEDERAL TAX CREDITS FOR ENERGY EFFICIENCY

Consult a qualified tax advisor or visit www.energystar.gov/taxcredits for details on any applicable federal tax credits or incentives available for installation of energy-efficient equipment.

Call **800-894-9599** today.

COMMERCIAL/INDUSTRIAL

Energy costs are a crucial part of the bottom line of any business. If your South Dakota business purchases its energy from MidAmerican Energy, you can get better control of your energy expenditures with our EnergyAdvantage® programs.

BusinessCheck® Program

This program is intended for small businesses interested in increasing the energy efficiency of their operations. An energy specialist from MidAmerican Energy will perform an on-site energy audit and install simple energy-saving lighting and water heating measures at no cost. MidAmerican Energy also offers rebate incentives for energy-efficient upgrades.

The energy audit report will include recommendations for energy-saving projects and information about MidAmerican Energy rebates available to help ease the cost of investing in high-efficiency equipment for long-term energy and energy cost-savings. MidAmerican Energy offers special rebate incentives through BusinessCheck to assist customers in what often are the two best ways to save energy and cost – retrofitting fluorescent lighting and upgrading insulation levels in attics/roofs/ceilings and sidewalls. Rebates for other energy-saving projects are the same as offered under the Nonresidential Equipment program.

Call 877-401-4059 for a BusinessCheck audit, or visit www.midamericanenergy.com/busaudit to complete an audit online.

Nonresidential Equipment Program

Rebate incentives are available for qualifying lighting, insulation, motors, variable-speed drives, heating, cooling, refrigeration and kitchen equipment to commercial, institutional, industrial and agribusiness facilities served by MidAmerican Energy. Business customers can receive rebates through the Nonresidential Equipment program when they replace existing equipment. Rebates are

available for efficient lighting systems (\$3-\$50 per unit), efficient motors (\$25-\$1,595), variable-speed drives (\$30 per horsepower of the driven motor), efficient kitchen equipment (\$50-\$500), or make insulation improvements to code. Rebates also are available for various heating and cooling measures such as efficient air conditioners, chillers, natural gas furnaces, water heaters and heat pumps. In addition to the rebates, customers benefit from lower utility bills over the life of the new equipment.

Nonresidential Custom Systems Program

The program encourages commercial, institutional and industrial customers to purchase and install customized energy-efficient building or manufacturing equipment and systems. Rebate incentives are based on the incremental cost of improvements and projected energy savings.

Only equipment measures that are not eligible for rebates under the Nonresidential Equipment program are considered for eligibility in the Nonresidential Custom Systems program. Equipment measures can not be included on the eligible equipment list in the Nonresidential Equipment program. In addition, a Custom Systems project preapproval application must be received and approved by MidAmerican Energy prior to the customer's purchase and installation of the equipment or system. Rebates will be customized based on a qualifying equipment's higher incremental cost, peak demand reduction and annual energy and energy cost savings.

Customers may call MidAmerican Energy at 800-318-8915 with questions about application procedures, qualifying projects and rebate incentives.

FEDERAL TAX DEDUCTIONS FOR ENERGY EFFICIENCY

For a limited time, a tax deduction of up to \$1.80 per square foot is available to owners or designers of new or existing commercial buildings that save at least 50 percent of the heating and cooling energy of a building that meets ASHRAE Standard 90.1-2001. Partial deductions of up to \$.60 per square foot can be taken for measures affecting any one of three building systems: the building envelope, lighting, or heating and cooling systems. Visit www.energystar.gov/taxcredits and click on Commercial Buildings under Other Tax Information for details or consult a tax advisor.