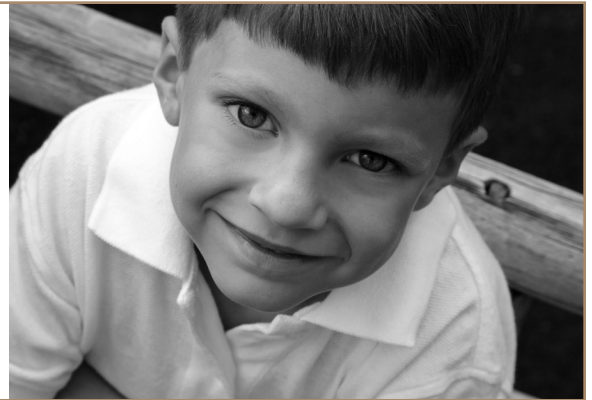


building E|nergy management

program | Where will you place your E ?



Managed by the State of Iowa since 1988 to promote energy efficiency in public buildings and save taxpayer dollars.

New Low Interest Revolving Loan Fund

Purpose:

Finance energy efficiency and renewable energy projects enrolled in Iowa's public Building Energy Management program. With qualified energy efficiency improvements, public facilities need no upfront capital or additional appropriations. Loans are arranged to be repaid using the energy bill savings.

Eligible participants:

State agencies, school districts, area education agencies, hospitals, public and private colleges and universities, community colleges and local governments enrolled in the Building Energy Management program.

Program delivery consultants / E coaches:

The Energy Group

Loan servicing:

Iowa Finance Authority

Rate: 1% interest

Origination fee: 2% of principal, which can be financed as a part of the overall package.

Term: Up to 15 years.

Timeline: Borrower must spend funds by March 30, 2012.

Reporting requirements: Federal reporting requirements apply:

- Buy American purchasing
 - Davis-Bacon Act wages
 - National Environmental Policy Act
 - National Historic Preservation Act
- Reporting formats, tools and support will be provided.

How: Contact your Building Energy Management E coach at ecoach@iowa.gov or 877-571-6625.

To ensure cost effectiveness, technical quality and accuracy, all projects applying for loan funds will be required to have an up-to-date energy efficiency study.

Unbiased Expert
Consultation

Energy Audit and
Technical Analysis

Finance Package
Creation

Project Implementation
Support

Facilitated by the Iowa Office of Energy Independence
Wallace Building | 502 East 9th Street | Des Moines, IA 50319 | p 515.725.0431 | www.energy.iowa.gov

03/02/2011